

# Wellness Signage System



# We Are Creative Fabricators



## ROOTED IN OVER 35 YEARS

Compex Display is an employee-owned, fully-integrated leader in design and fabrication, spanning over 35 years. From value-driven visual communication systems (signage, fixtures, graphics) and interior / exterior signage, to donor recognition solutions, drive-thru solutions, menu boards, stock display fixtures and so much more, we are a true powerhouse of creativity and craftsmanship.

We have the advantage of combining our unique design proficiency and strong project management skills, with solid fabrication expertise, to create an unparalleled customer experience with their customers and guests.



585 Third Street, Unit B  
London, ON N5V 2C1

1-888-454-5557 | 519-432-9081  
[www.compexdisplay.com](http://www.compexdisplay.com)

# We Are Here to Help.

At Compex Display we are industry pioneers. Our display fixtures allow restaurants, retail stores, hotels, universities, and more to revolutionize the way they communicate.

As the current COVID-19 situation brings on new needs on a daily basis, Compex Display has done its best to help clients both communicate and facilitate health & safety measures.

We are repurposing many of our **stock offerings** and **inventing new ones** to fulfill these unprecedented needs. Included within this document are a few key areas we are thinking about and are able to provide quickly given we have the product available.

All of which can be customized to either be customer facing or for internal use and communication:

- Flexible, changeable health & safety messaging and signage solutions
- Freestanding protective health barriers (customer/staff)
- Branded/custom hand sanitation & communication stations

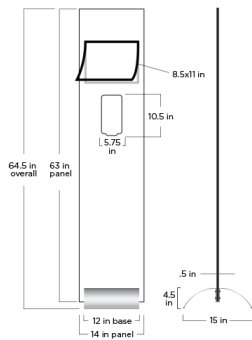
From retail and foodservice informational and safety displays to educational and hospitality applications our display fixtures and signage solutions provide people with the information they need when and where they need it.



# Sanitizer Stands

## DESCRIPTION

- 64.5" overall height
- Sanitizer not included (by others)
- Gray, Black, or Maple finish
- Black or silver MagaFrame™
- Choose one of four paper inserts
- Custom branded backgrounds and other finishes available.



## SANITIZER STAND INSERTS

- 8.5" H x 11" W
- Choose from four different designs OR
- Print your own insert or send us your custom message requirements



# MagaFrame™



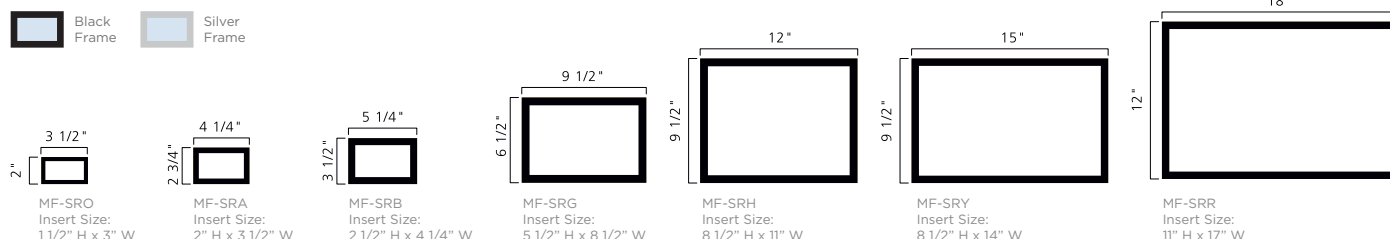
Make the most of your doors, windows, wall space and sneeze guards as selling and promotional venues with our MagaFrame™ lens system.

Now you can place your promotional messaging anywhere and everywhere you'd like. The MagaFrame™ self-adhesive lens system makes it easy to change out inserts and can be applied to any flat surface.

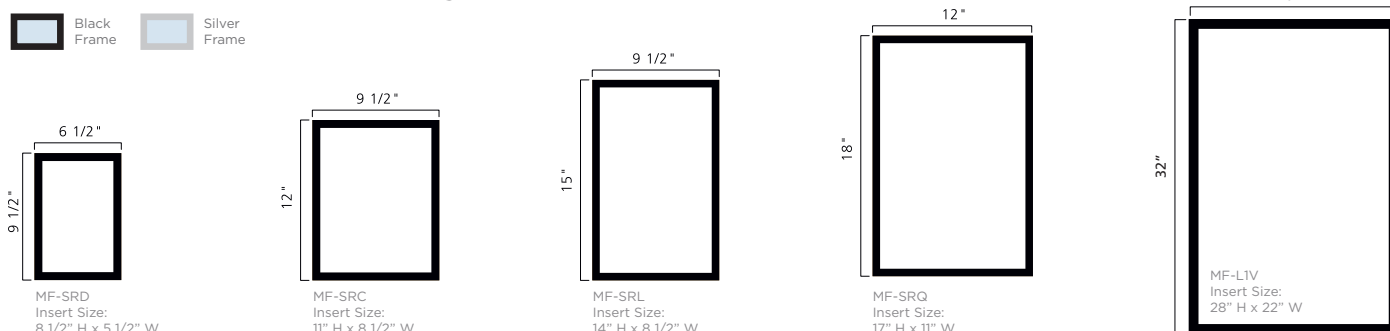
MagaFrame™ is ideal for sneezeguard and beverage cooler applications. For glass doors and windows, two inserts can be placed back-to-back for double the communications and selling impact.

Available in a wide range of sizes, MagaFrame™ can also be customized to incorporate your brand logo, or to work with any decor scheme.

## Horizontal Format | Custom sizes and designs are available.



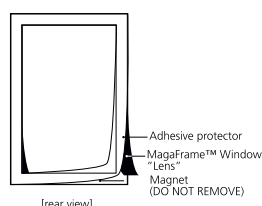
## Vertical Format | Custom sizes and designs are available.



## Easy To Use

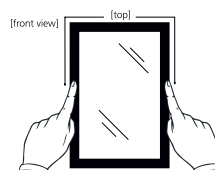
### STEP 1

Peel and remove adhesive protector from rear of magnet.



### STEP 2

Align MagaFrame™ and apply by pressing firmly on lens from top to bottom. (MagaLens® opens from the bottom).

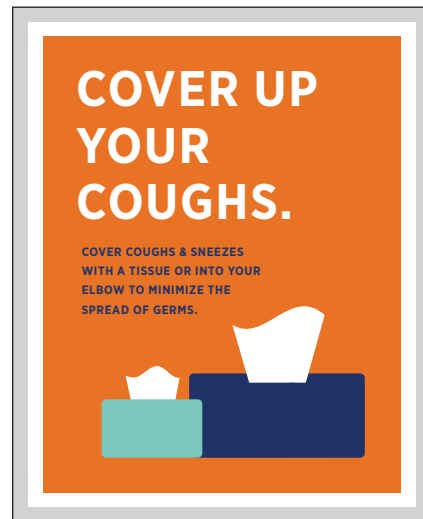
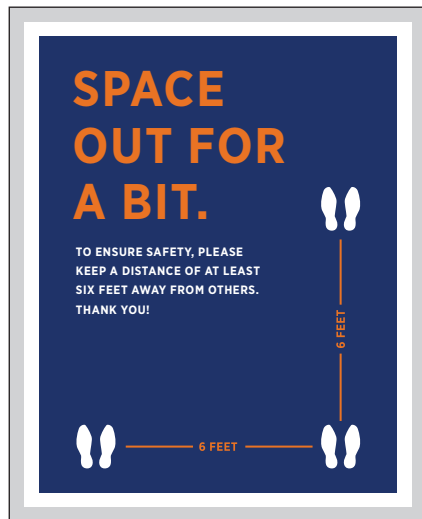


### STEP 3

Lift lens from bottom edge and insert your printed graphic.



# Notification Signs



## OPTION 1

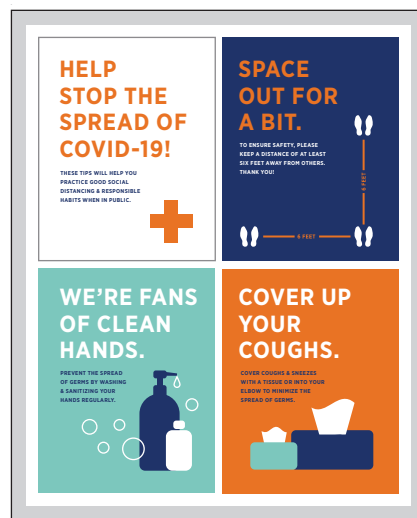
- 32" H x 26" W  
MagaFrame™ with  
28" H x 22" W  
Paper Insert (Shown)

## OPTION 2

- Printed and laminated to 1/8" sintra with double-faced tape

## OPTION 3

- Window Clings



# Notification Signs

## OPTION 1

- Printed and laminated to 1/8" sintra, mounted with double-faced tape



## OPTION 2

- Black or silver 12" H x 18 W" MagaFrame™ with 11" H x 17" W Paper Insert (shown)



## DESCRIPTION

- 4" H x 12" W
- 1/8" sintra mounted with foam tape



# Blade Signs

## DESCRIPTION

- 24" H x 9" W
- Three color options
- 1/8" thick Double faced sintra with plastic T wall mount



# Floor Graphics

## DESCRIPTION

- 3M Print with Overlam
- 12" diameter
- Three design options



## DESCRIPTION

- 3M Print with Overlam
- 6" H x 72" W
- Two design options



## DESCRIPTION

- 3M Print with Overlam
- 6" H x 24" W
- Three color options





# Compex Display

## Online

[www.compexdisplay.com](http://www.compexdisplay.com)  
[info@compexdisplay.com](mailto:info@compexdisplay.com)

## Offline

585 Third Street, Unit B  
London, ON N5V 2C1

## Phone

1-888-454-5557  
519-432-9081

---



585 Third Street, Unit B  
London, ON N5V 2C1

1-888-454-5557 | 519-432-9081  
[www.compexdisplay.com](http://www.compexdisplay.com)